

CONCEPT 4
FOR INFORMATION ONLY

Scales

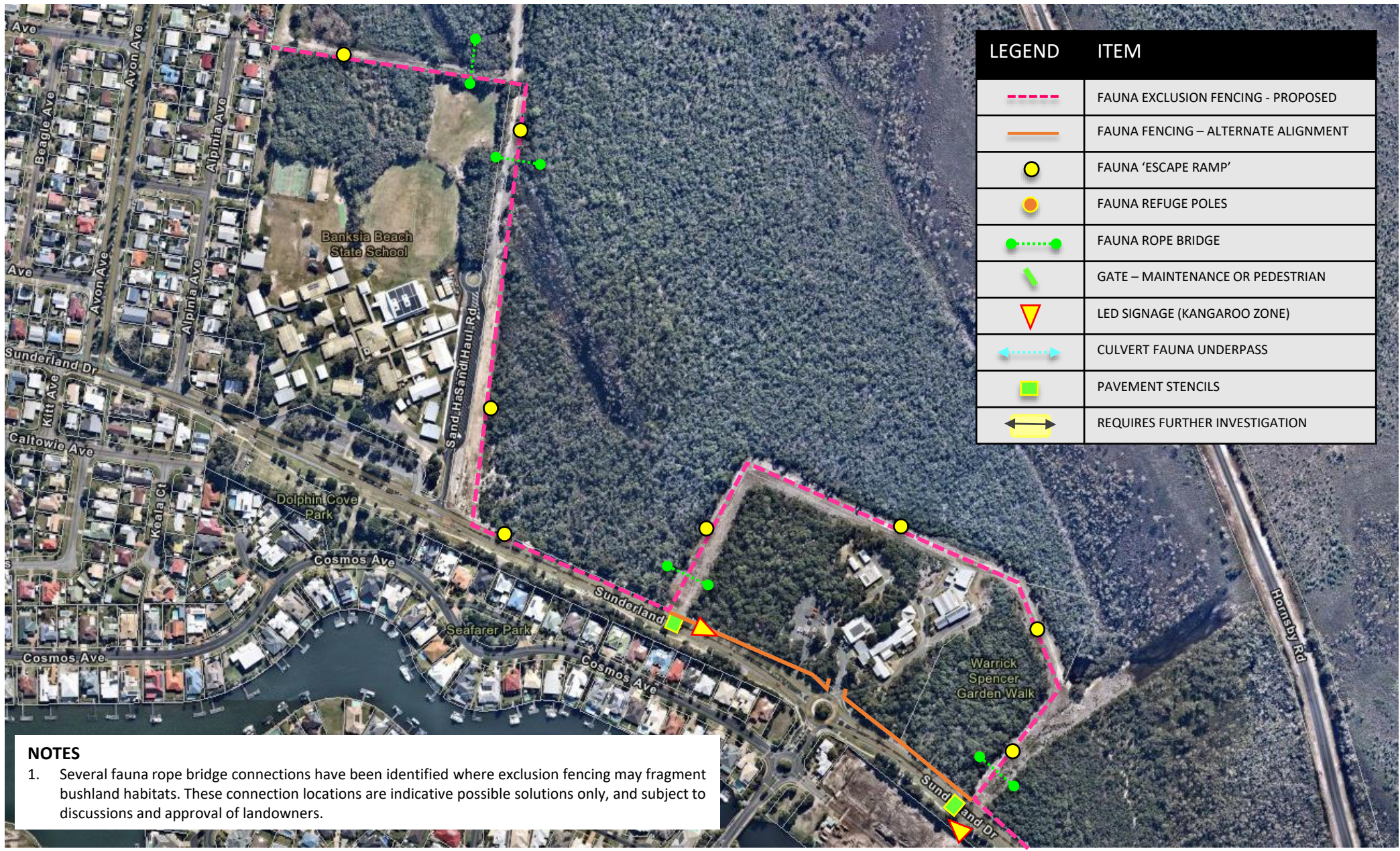
BANKSIA BEACH

SUNDERLAND DRIVE

FAUNA CROSSING
INFRASTRUCTURE
CONCEPT

DRAWING NUMBER

Designer Original Issue Date
Drawing of Original Plan Size



LEGEND	ITEM
	FAUNA EXCLUSION FENCING - PROPOSED
	FAUNA FENCING – ALTERNATE ALIGNMENT
	FAUNA 'ESCAPE RAMP'
	FAUNA REFUGE POLES
	FAUNA ROPE BRIDGE
	GATE – MAINTENANCE OR PEDESTRIAN
	CULVERT FAUNA UNDERPASS
	PAVEMENT STENCILS
	REQUIRES FURTHER INVESTIGATION

NOTES

- Several fauna rope bridge connections have been identified where exclusion fencing may fragment bushland habitats. These connection locations are indicative possible solutions only, and subject to discussions and approval of landowners.

CONCEPT 5

FOR INFORMATION ONLY

Scales

BANKSIA BEACH

SUNDERLAND DRIVE

FAUNA CROSSING
INFRASTRUCTURE
CONCEPT

DRAWING NUMBER

Designer	Original Issue Date
Drawing	of
	Original Plan Size



LEGEND	ITEM
	FAUNA EXCLUSION FENCING - PROPOSED
	FAUNA FENCING – ALTERNATE ALIGNMENT
	FAUNA 'ESCAPE RAMP'
	FAUNA REFUGE POLES
	FAUNA ROPE BRIDGE
	GATE – MAINTENANCE OR PEDESTRIAN
	LED SIGNAGE (KANGAROO ZONE)
	CULVERT FAUNA UNDERPASS
	PAVEMENT STENCILS
	REQUIRES FURTHER INVESTIGATION

CONCEPT 6
FOR INFORMATION ONLY

Scales

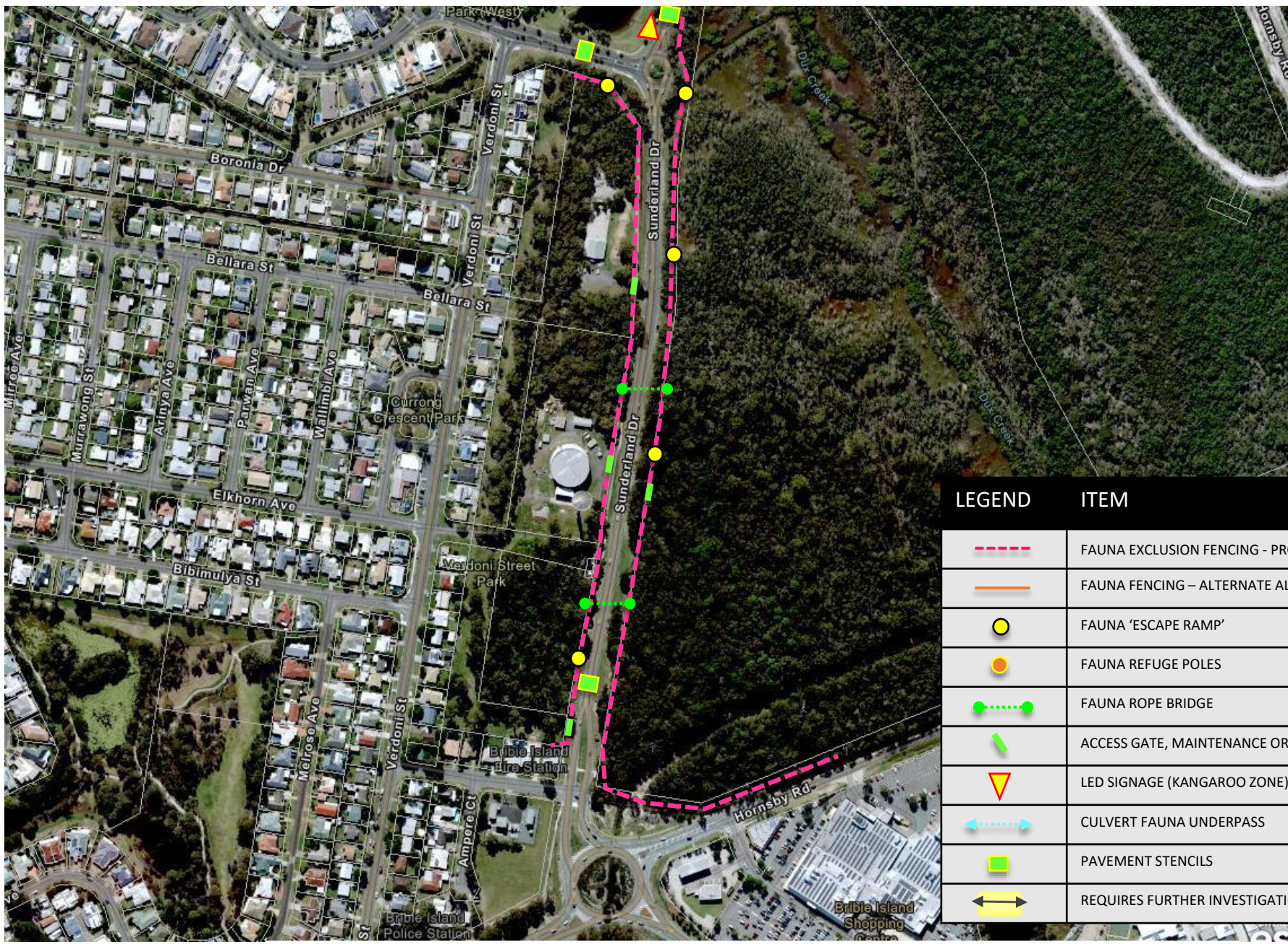
BANKSIA BEACH

SUNDERLAND DR &
HORNSBY RD

FAUNA CROSSING
INFRASTRUCTURE
CONCEPT

DRAWING NUMBER

Designer	Original Issue Date
Drawing of	Original Plan Size



LEGEND	ITEM
	FAUNA EXCLUSION FENCING - PROPOSED
	FAUNA FENCING – ALTERNATE ALIGNMENT
	FAUNA ‘ESCAPE RAMP’
	FAUNA REFUGE POLES
	FAUNA ROPE BRIDGE
	ACCESS GATE, MAINTENANCE OR PEDESTRIAN
	LED SIGNAGE (KANGAROO ZONE)
	CULVERT FAUNA UNDERPASS
	PAVEMENT STENCILS
	REQUIRES FURTHER INVESTIGATION