

CONCEPT 10

FOR INFORMATION ONLY

Scale:

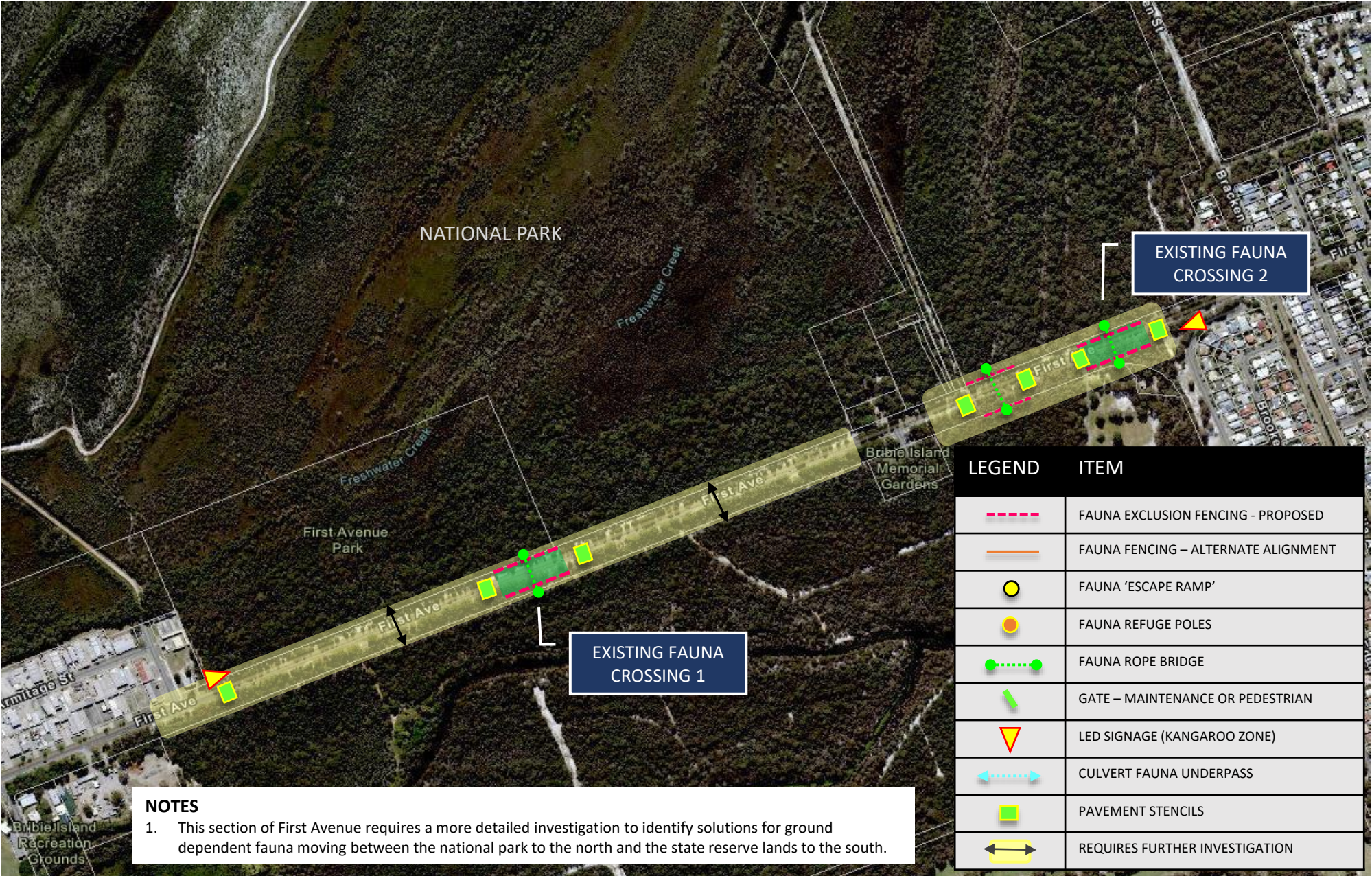
WOORIM

FIRST AVENUE

FAUNA CROSSING  
INFRASTRUCTURE  
CONCEPT

DRAWING NUMBER

Designer Original Issue Date  
Drawing of Original Plan Size



- NOTES**
1. This section of First Avenue requires a more detailed investigation to identify solutions for ground dependent fauna moving between the national park to the north and the state reserve lands to the south.

LEGEND	ITEM
	FAUNA EXCLUSION FENCING - PROPOSED
	FAUNA FENCING – ALTERNATE ALIGNMENT
	FAUNA ‘ESCAPE RAMP’
	FAUNA REFUGE POLES
	FAUNA ROPE BRIDGE
	GATE – MAINTENANCE OR PEDESTRIAN
	LED SIGNAGE (KANGAROO ZONE)
	CULVERT FAUNA UNDERPASS
	PAVEMENT STENCILS
	REQUIRES FURTHER INVESTIGATION