



---

Green Infrastructure Network  
INTEGRATED TRANSPORT PLANNING & DESIGN



CONCEPT  
FOR INFORMATION ONLY



Moreton Bay Regional Council is proposing to install fauna movement infrastructure on Bribie Island to reduce wildlife-vehicle collisions involving kangaroos and wallabies.

Between 21 May and 14 July 2021, we undertook community consultation to gather ‘on ground’ knowledge to identify key locations where drivers encounter kangaroos and wallabies on Bribie Island.

The information gathered during this consultation, in conjunction with Council’s existing data, has been used to identify priority roads requiring fauna movement infrastructure. Council has developed proposed infrastructure solutions for the priority roads, and these are outlined in the following concept plans for community feedback.

Things to note when reviewing concepts.

- 1. The following infrastructure solutions are presented for community information and feedback. These are draft, concept level designs and not approved for construction. A certified detailed design will be required to progress to construction.
- 2. The delivery of these solutions is subject to assessment against regional network priorities, funding and approvals.
- 3. The concepts do not represent acceptance or support from adjacent land holders where infrastructure is proposed on, or near shared boundaries or private land.
- 4. These concepts are indicative only and are subject to change during detailed design.

CONCEPT MAP	ROAD NETWORK
1 & 1a	WHITEPATCH ESPLANADE
2	FRESHWATER DRIVE & SURROUNDS
3	AVON AVENUE
4	SUNDERLAND DR
5	SUNDERLAND DRIVE (STH OF EAGLES LNDG)
6	SUNDERLAND DR & HORNSBY RD
7	COTERILL AVE & PROTEA DR & GOBY ST
8	GOODWIN DRIVE & FIRST AVE
9	FIRST AVE (BONGAREE)
10	FIRST AVE (WOORIM)



# CONCEPT 1

FOR INFORMATION ONLY

Scales

WHITE PATCH

WHITE PATCH ESP

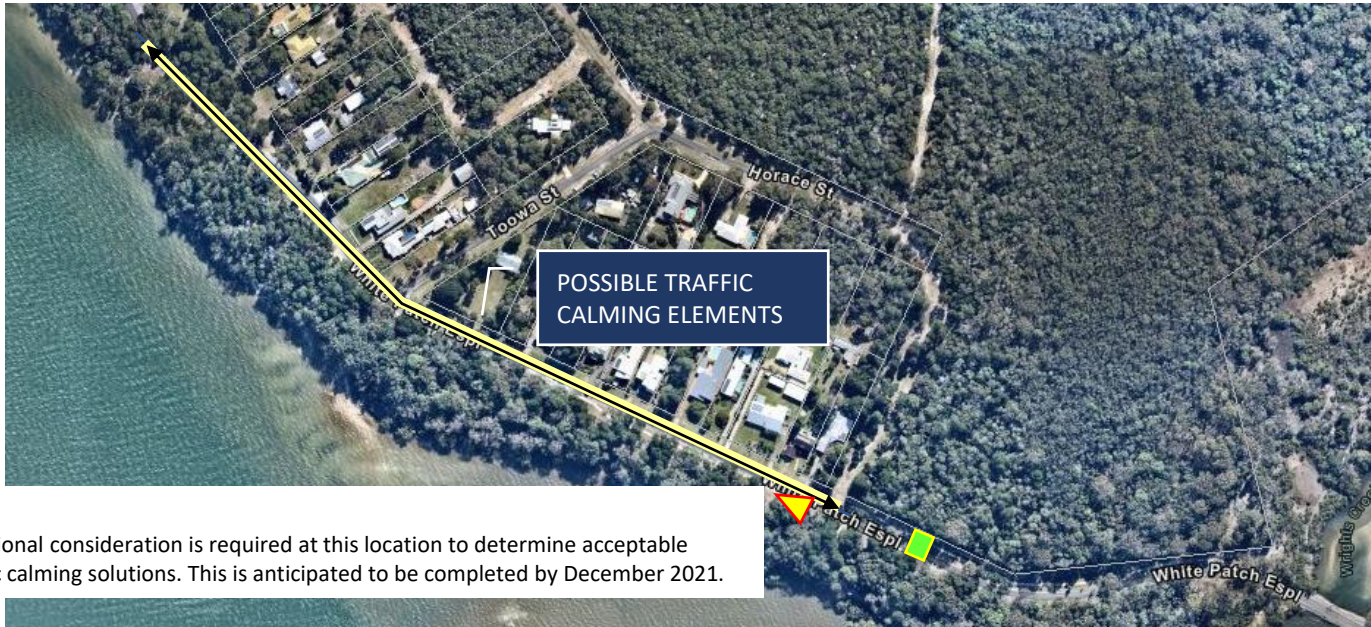
FAUNA CROSSING  
INFRASTRUCTURE  
CONCEPT

DRAWING NUMBER

Designer Original Issue Date  
Drawing of Original Plan Size



JOINS WITH BELOW LEFT



LEGEND	ITEM
	FAUNA EXCLUSION FENCING - PROPOSED
	FAUNA FENCING – ALTERNATE ALIGNMENT
	FAUNA 'ESCAPE RAMP'
	FAUNA REFUGE POLES
	FAUNA ROPE BRIDGE
	GATE – MAINTENANCE OR PEDESTRIAN
	LED SIGNAGE (KANGAROO ZONE)
	CULVERT FAUNA UNDERPASS
	PAVEMENT STENCILS
	REQUIRES FURTHER INVESTIGATION

## NOTES

1. Additional consideration is required at this location to determine acceptable traffic calming solutions. This is anticipated to be completed by December 2021.





LEGEND	ITEM
	FAUNA EXCLUSION FENCING - PROPOSED
	FAUNA FENCING – ALTERNATE ALIGNMENT
	FAUNA ‘ESCAPE RAMP’
	FAUNA REFUGE POLES
	FAUNA ROPE BRIDGE
	GATE – MAINTENANCE OR PEDESTRIAN
	LED SIGNAGE (KANGAROO ZONE)
	CULVERT FAUNA UNDERPASS
	PAVEMENT STENCILS
	REQUIRES FURTHER INVESTIGATION

# CONCEPT 1a

FOR INFORMATION ONLY

Scales

WHITE PATCH

WHITE PATCH ESP &  
ENDEAVOUR DR

FAUNA CROSSING  
INFRASTRUCTURE  
CONCEPT

DRAWING NUMBER

Designer Original Issue Date  
Drawing of Original Plan Size



CONCEPT 2  
FOR INFORMATION ONLY



LEGEND	ITEM
	FAUNA EXCLUSION FENCING - PROPOSED
	FAUNA FENCING – ALTERNATE ALIGNMENT
	FAUNA ‘ESCAPE RAMP’
	FAUNA REFUGE POLES
	FAUNA ROPE BRIDGE
	GATE – MAINTENANCE OR PEDESTRIAN
	LED SIGNAGE (KANGAROO ZONE)
	CULVERT FAUNA UNDERPASS
	PAVEMENT STENCILS
	REQUIRES FURTHER INVESTIGATION





LEGEND	ITEM
	FAUNA EXCLUSION FENCING - PROPOSED
	FAUNA FENCING – ALTERNATE ALIGNMENT
	FAUNA 'ESCAPE RAMP'
	FAUNA REFUGE POLES
	FAUNA ROPE BRIDGE
	GATE – MAINTENANCE OR PEDESTRIAN
	LED SIGNAGE (KANGAROO ZONE)
	CULVERT FAUNA UNDERPASS
	PAVEMENT STENCILS
	REQUIRES FURTHER INVESTIGATION

CONCEPT 3

FOR INFORMATION ONLY



CONCEPT 4  
FOR INFORMATION ONLY

Scales

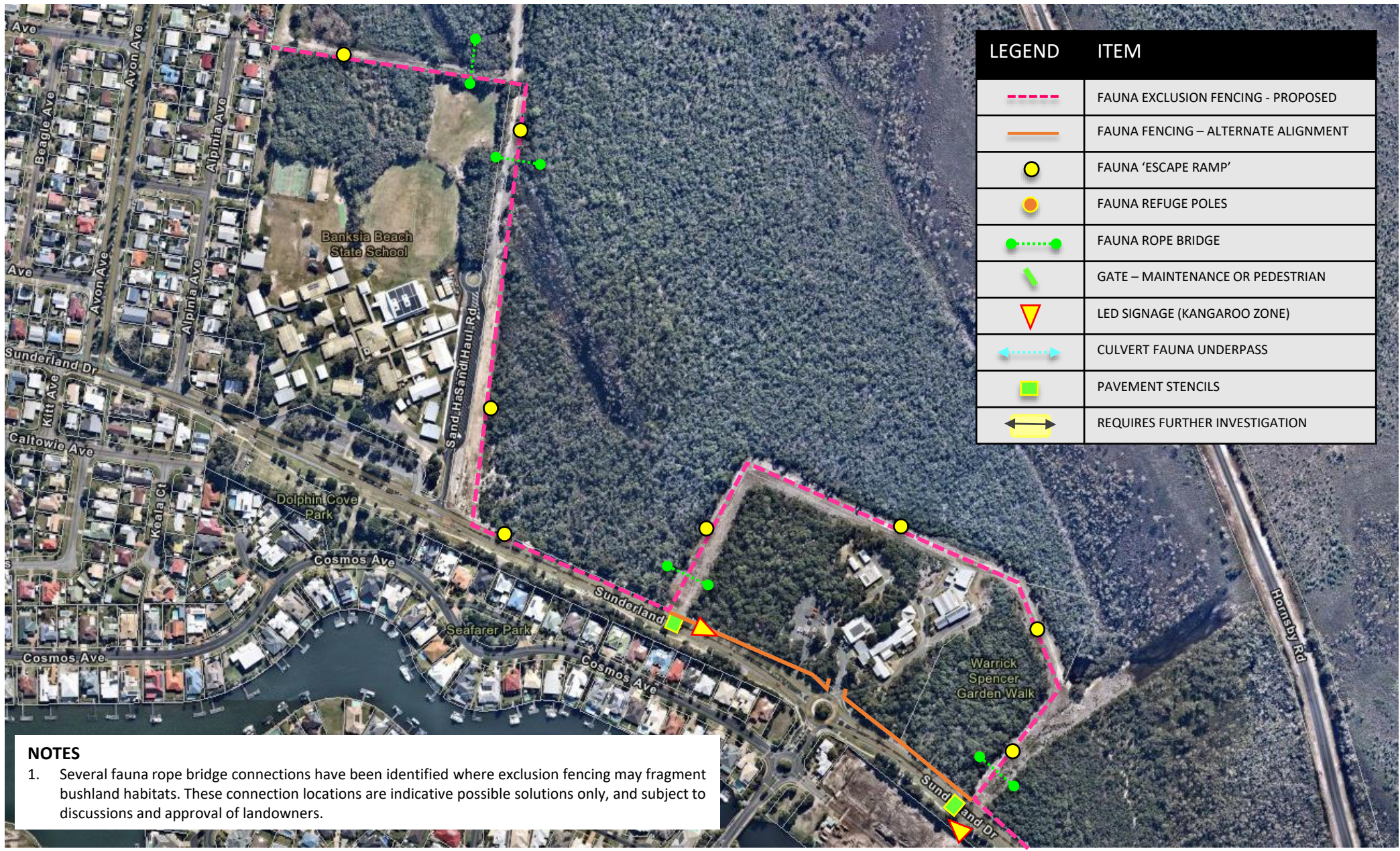
BANKSIA BEACH

SUNDERLAND DRIVE

FAUNA CROSSING  
INFRASTRUCTURE  
CONCEPT

DRAWING NUMBER

Designer Original Issue Date  
Drawing of Original Plan Size



LEGEND	ITEM
	FAUNA EXCLUSION FENCING - PROPOSED
	FAUNA FENCING – ALTERNATE ALIGNMENT
	FAUNA 'ESCAPE RAMP'
	FAUNA REFUGE POLES
	FAUNA ROPE BRIDGE
	GATE – MAINTENANCE OR PEDESTRIAN
	CULVERT FAUNA UNDERPASS
	PAVEMENT STENCILS
	REQUIRES FURTHER INVESTIGATION

NOTES

- Several fauna rope bridge connections have been identified where exclusion fencing may fragment bushland habitats. These connection locations are indicative possible solutions only, and subject to discussions and approval of landowners.



CONCEPT 5  
FOR INFORMATION ONLY

Scales

BANKSIA BEACH

SUNDERLAND DRIVE

FAUNA CROSSING  
INFRASTRUCTURE  
CONCEPT

DRAWING NUMBER

Designer Original Issue Date  
Drawing of Original Plan Size



LEGEND	ITEM
	FAUNA EXCLUSION FENCING - PROPOSED
	FAUNA FENCING – ALTERNATE ALIGNMENT
	FAUNA 'ESCAPE RAMP'
	FAUNA REFUGE POLES
	FAUNA ROPE BRIDGE
	GATE – MAINTENANCE OR PEDESTRIAN
	LED SIGNAGE (KANGAROO ZONE)
	CULVERT FAUNA UNDERPASS
	PAVEMENT STENCILS
	REQUIRES FURTHER INVESTIGATION



CONCEPT 6  
FOR INFORMATION ONLY

Scales

BANKSIA BEACH

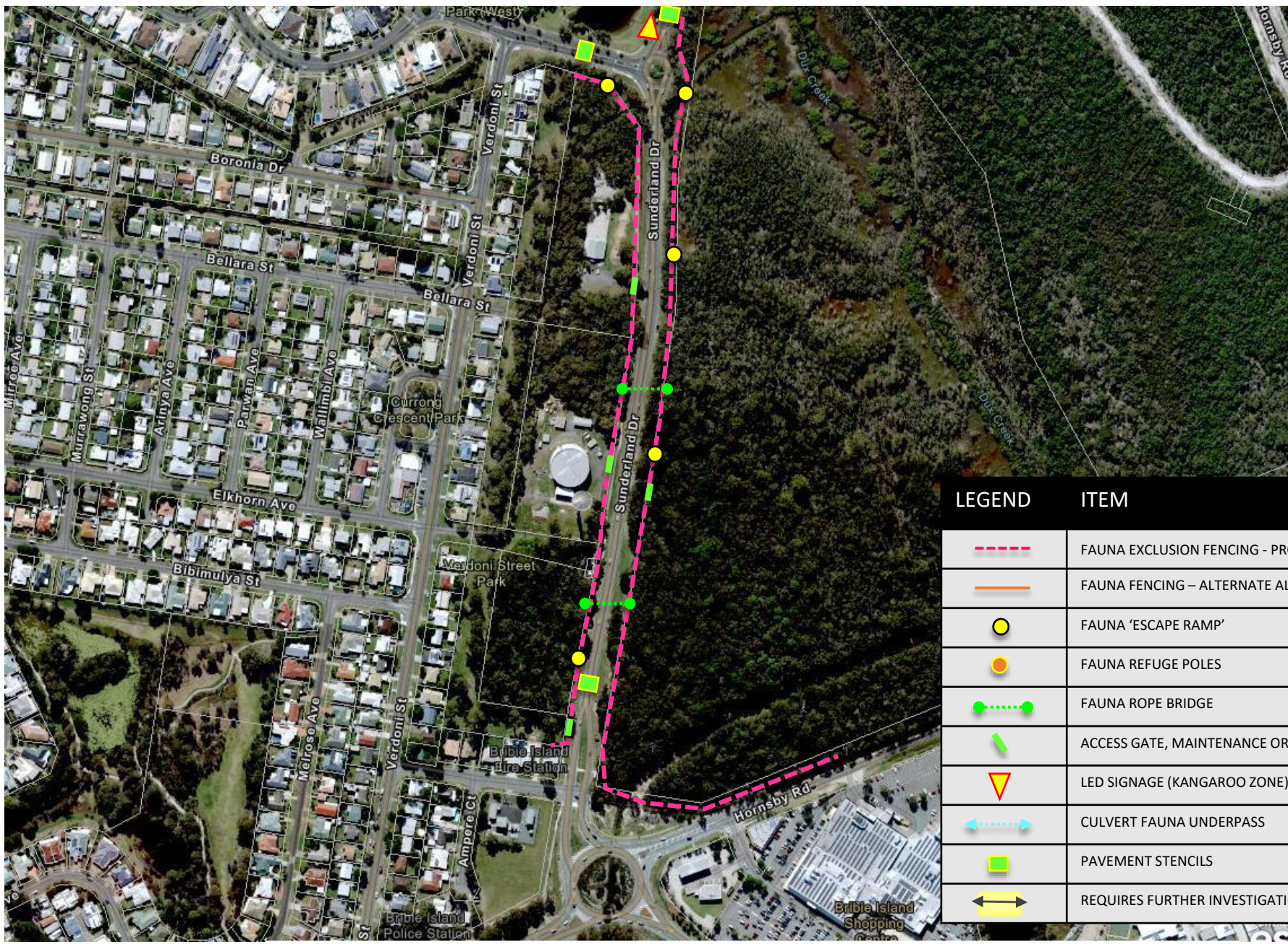
SUNDERLAND DR &  
HORNSBY RD

FAUNA CROSSING  
INFRASTRUCTURE  
CONCEPT

DRAWING NUMBER

Designer Original Issue Date

Drawing of Original Plan Size



LEGEND	ITEM
	FAUNA EXCLUSION FENCING - PROPOSED
	FAUNA FENCING – ALTERNATE ALIGNMENT
	FAUNA ‘ESCAPE RAMP’
	FAUNA REFUGE POLES
	FAUNA ROPE BRIDGE
	ACCESS GATE, MAINTENANCE OR PEDESTRIAN
	LED SIGNAGE (KANGAROO ZONE)
	CULVERT FAUNA UNDERPASS
	PAVEMENT STENCILS
	REQUIRES FURTHER INVESTIGATION



# CONCEPT 7

FOR INFORMATION ONLY

Scales:

BONGAREE

COTTERILL AV,  
PROTEA DR & GOBY ST

FAUNA CROSSING  
INFRASTRUCTURE  
CONCEPT

DRAWING NUMBER



LEGEND	ITEM
	FAUNA EXCLUSION FENCING - PROPOSED
	FAUNA FENCING – ALTERNATE ALIGNMENT
	FAUNA ‘ESCAPE RAMP’
	FAUNA REFUGE POLES
	FAUNA ROPE BRIDGE
	GATE – MAINTENANCE / PEDESTRIAN
	LED SIGNAGE (KANGAROO ZONE)
	CULVERT FAUNA UNDERPASS
	PAVEMENT STENCILS
	REQUIRES FURTHER INVESTIGATION



CONCEPT 8  
FOR INFORMATION ONLY

Scales

BONGAREE

GOODWIN DRIVE

FAUNA CROSSING  
INFRASTRUCTURE  
CONCEPT

DRAWING NUMBER

Designer Original Issue Date  
Drawing of Original Plan Size



LEGEND	ITEM
	FAUNA FENCING - PROPOSED
	FAUNA FENCING – ALTERNATE ALIGNMENT
	FAUNA 'ESCAPE RAMP'
	FAUNA REFUGE POLES
	FAUNA ROPE BRIDGE
	GATE – MAINTENANCE OR PEDESTRIAN
	LED SIGNAGE (KANGAROO ZONE)
	CULVERT FAUNA UNDERPASS
	PAVEMENT STENCILS
	REQUIRES FURTHER INVESTIGATION



CONCEPT 9  
FOR INFORMATION ONLY

Scales

BONGAREE

FIRST AVENUE

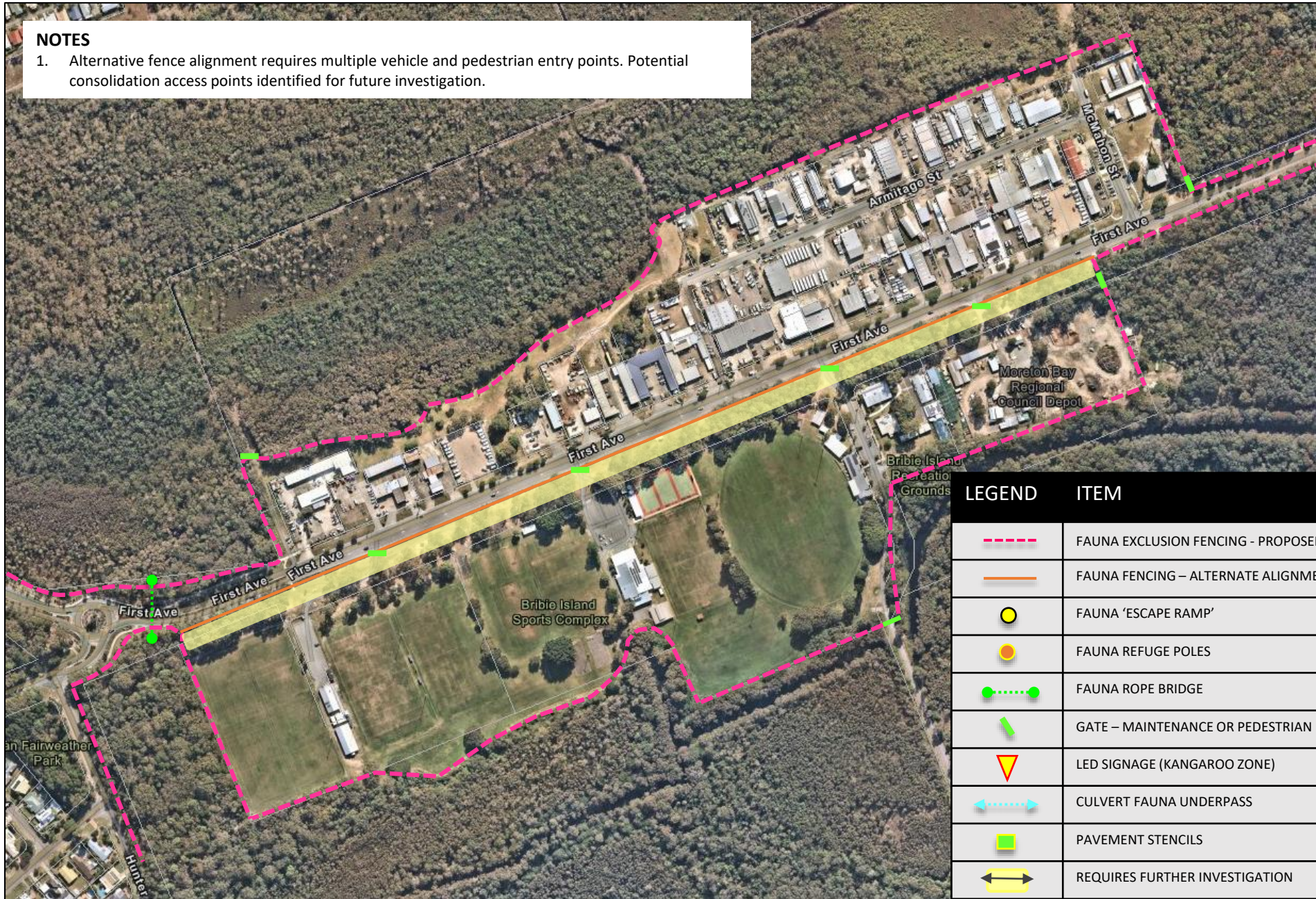
FAUNA CROSSING  
INFRASTRUCTURE  
CONCEPT

DRAWING NUMBER

Designer Original Issue Date  
Drawing of Original Plan Size

NOTES

1. Alternative fence alignment requires multiple vehicle and pedestrian entry points. Potential consolidation access points identified for future investigation.



LEGEND	ITEM
	FAUNA EXCLUSION FENCING - PROPOSED
	FAUNA FENCING – ALTERNATE ALIGNMENT
	FAUNA 'ESCAPE RAMP'
	FAUNA REFUGE POLES
	FAUNA ROPE BRIDGE
	GATE – MAINTENANCE OR PEDESTRIAN
	LED SIGNAGE (KANGAROO ZONE)
	CULVERT FAUNA UNDERPASS
	PAVEMENT STENCILS
	REQUIRES FURTHER INVESTIGATION



CONCEPT 10

FOR INFORMATION ONLY

Scale:

WOORIM

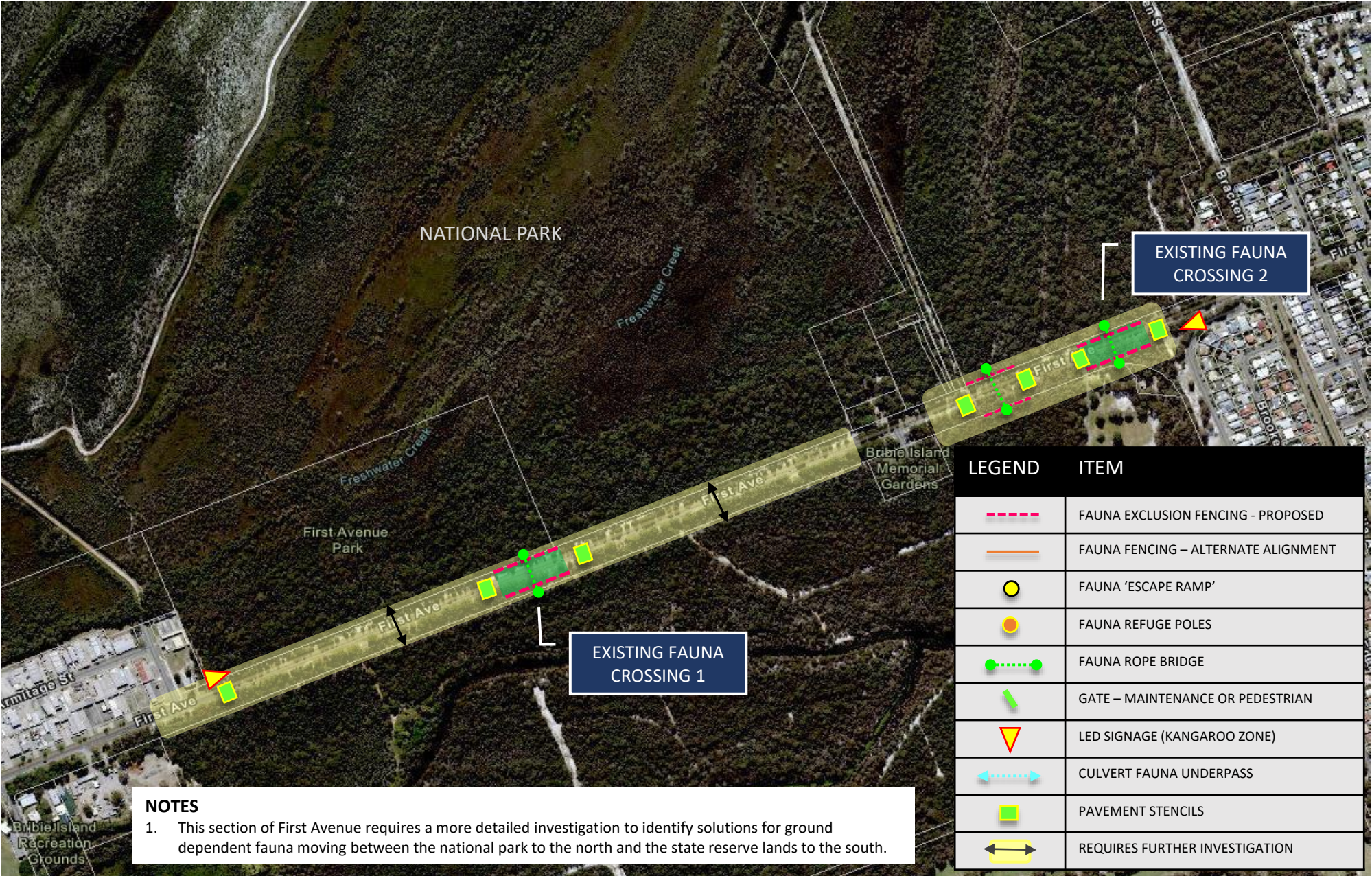
FIRST AVENUE

FAUNA CROSSING  
INFRASTRUCTURE  
CONCEPT

DRAWING NUMBER

Designer Original Issue Date

Drawing of Original Plan Size



NOTES

1. This section of First Avenue requires a more detailed investigation to identify solutions for ground dependent fauna moving between the national park to the north and the state reserve lands to the south.